

# SPECTROLINE®

## EK-3000 **EAGLE™** **EYE**

### UV-A/White Light LED Inspection Kit

(U.S. and foreign patents pending)

**A New Palm-Sized, Cool-Running,  
Hands-Free Light Source!**

Ideal for magnetic particle and fluorescent penetrant testing, mining inspection and a variety of other specialized applications!

#### Features

- Compact, lightweight lamp with two ultra-high intensity UV-A (365 nm) LEDs for inspection, plus a three-LED white light assembly for general illumination
- Adjustable strap allows lamp to be worn on a hard hat or directly on the head for hands-free operation
- Unique lamp mount/sprayer attachment permits lamp and spray can to be mounted together for convenient, single-handed penetrant yoke inspection
- Built-in fan keeps lamp cool to maintain optimum UV-A intensity during extended use
- Splash guard with integral particulate filter protects UV lenses and cooling fan from damage
- 30,000-hour LED service life
- Powered by a rechargeable lithium-ion battery (included). Provides up to 45 minutes of continuous inspection between charges.



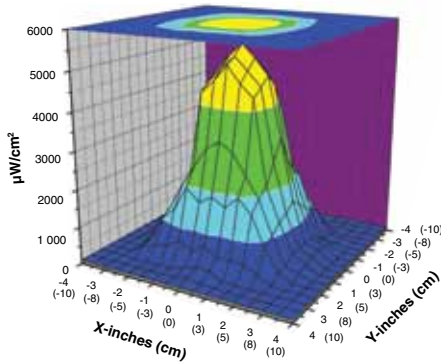
Spray penetrant and inspect  
in one simple step!



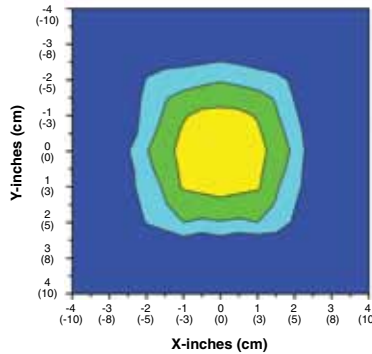
# EK-3000 **EAGLE EYE™**

## UV-A/White Light LED Inspection Kit

This versatile kit features the EagleEye lamp, a powerful, palm-sized unit with two ultra-high intensity UV-A (365 nm) LEDs for inspection, plus a three-LED white light assembly for illumination in dark work-spaces. An adjustable strap allows the lightweight lamp to be worn on a hard hat or directly on the head! This kit is perfect for magnetic particle and fluorescent penetrant testing, mining inspection and countless other “hands-free” inspection applications!



Surface Contour Profile at 15 in (38 cm)



Top Intensity Profile at 15 in (38 cm)



The EK-3000 EagleEye™ Kit also comes with a lanyard, two replacement splash guards with integral particulate filters, three spare batteries, battery charging cradle with AC and DC cord sets, UV-absorbing spectacles and soft carrying case.

### REPLACEMENT PARTS

<b>EE-365</b>	UV-A/white light LED lamp	<b>RB-365</b>	AC cord set
<b>LMS-100</b>	Lamp mount/sprayer	<b>RB-365DC</b>	DC cord set
<b>HS-100</b>	Head strap	<b>126712</b>	Lithium-ion battery (rechargeable)
<b>SG-100</b>	Splash guard with integral particulate filter (set of three)	<b>UVS-30</b>	UV-absorbing spectacles
<b>BCC-100</b>	Battery charging cradle with AC and DC cord sets	<b>UL-100</b>	UV lens
		<b>CC-370A</b>	Soft carrying case

### LAMP SPECIFICATIONS

**Product Number:**  
EE-365

**Light Sources:**  
2 UV LEDs, 3 white light LEDs

**Dimensions:**  
Length 3.75 in (9.5 cm)  
Width 2.25 in (5.7 cm)  
Height 1.85 in (4.7 cm)

**Weight with battery:** 8 oz (227 g)

**Power requirement:**  
One 3.7V 2200mA/Hr lithium-ion battery (rechargeable)

**Run time:**  
45 minutes (continuous)

**Charge time:**  
2 hours (one battery)  
8 hours (four batteries)

**Charging cradle:**  
Four-battery capability with AC and DC cord sets. AC cord set available in 120V, 230V, 240V and 100V versions.

**Nominal steady-state UV-A (365 nm) intensity:**  
6 in (15 cm) — 22,000  $\mu\text{W}/\text{cm}^2$   
15 in (38 cm) — 5,500  $\mu\text{W}/\text{cm}^2$   
24 in (61 cm) — 2,500  $\mu\text{W}/\text{cm}^2$   
36 in (91 cm) — 1,100  $\mu\text{W}/\text{cm}^2$

**NOTE:** All UV-A intensity readings taken with a Spectroline® AccuMAX™ Series meter

